

BASIN FLEX™

BY

VESTARON™
CROP PROTECTION

Best Use Guidelines

BASIN™ FLEX should always be tank mixed with an adjuvant (spreader-sticker) to ensure quality spray performance and coverage.

Tank Mixing Guide

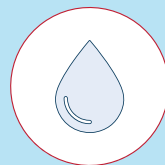
1



Read labels

Always read labels and **follow label instructions** carefully.

2



Water

Fill tank 1/3 full of water **before adding any pesticides**. Do not add BASIN FLEX to the mix tank before introducing the desired amount of water.

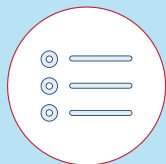
3



Agitate

Start **mechanical/hydraulic agitation** before adding BASIN FLEX.

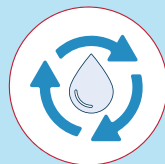
4



Mixing order

1. Water soluble bags (BASIN FLEX)
2. Water soluble granules
3. Water dispersible granules
4. Wettable powders
5. Water-based suspension concentrates
6. Water soluble concentrates
7. Suspoemulsions
8. Oil-based suspension concentrates
9. Adjuvants and surfactants. Always use adjuvant and/or surfactant to improve spray coverage.

5



Circulate

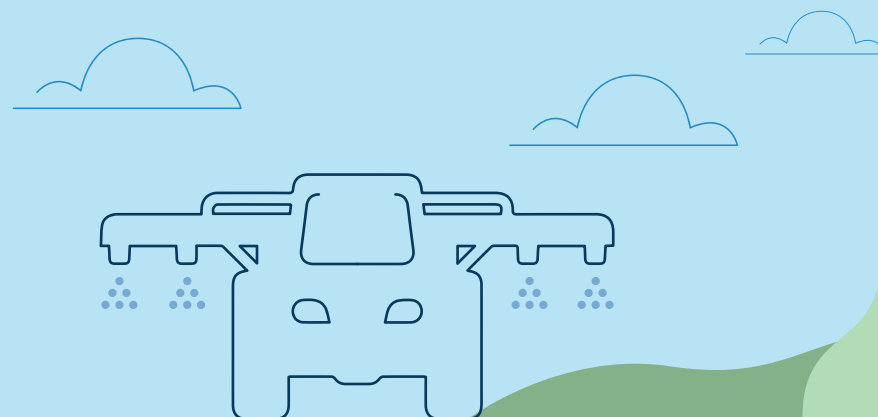
Add remaining amount of water required as per mixing instructions. **Maintain circulation** while loading and spraying solution.

6



Apply

Apply 4 to 8 oz. BASIN FLEX per acre with a low label rate of a Bt product to control lepidopteran larvae. Check the label or **contact a sales representative** for the suggested application interval.



BASIN FLEX™

BY

VESTARON
CROP PROTECTION



REACH YOUR
LOCAL TERRITORY
SALES REP

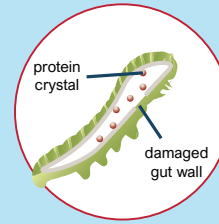
Route of Entry

1



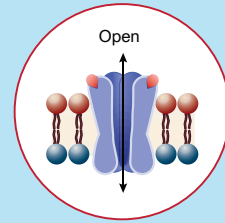
BASIN® FLEX peptide is too large to cross the insect gut alone.

2



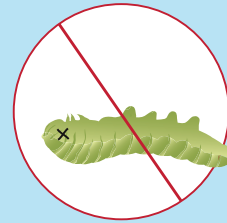
A low dose rate of Bt causes perforations in the insect gut. The pest will stop feeding between 4 and 12 hours.

3



BASIN FLEX binds neurotransmitters and opens ion channels disrupting the nerve cell so it can no longer send signals.

4



Once inside, nerve and muscular symptoms will begin between 24 and 48 hours, worm discoloration will appear, and pests will begin to die.

Bioavailability

Bt improves bioavailability of BASIN FLEX to the neuromuscular target site, improving efficacy compared to BASIN FLEX alone.

